



MONTHLY MEMBERSHIP PROGRESS REPORT

District 2 E2

Results as of: 5/31/2014

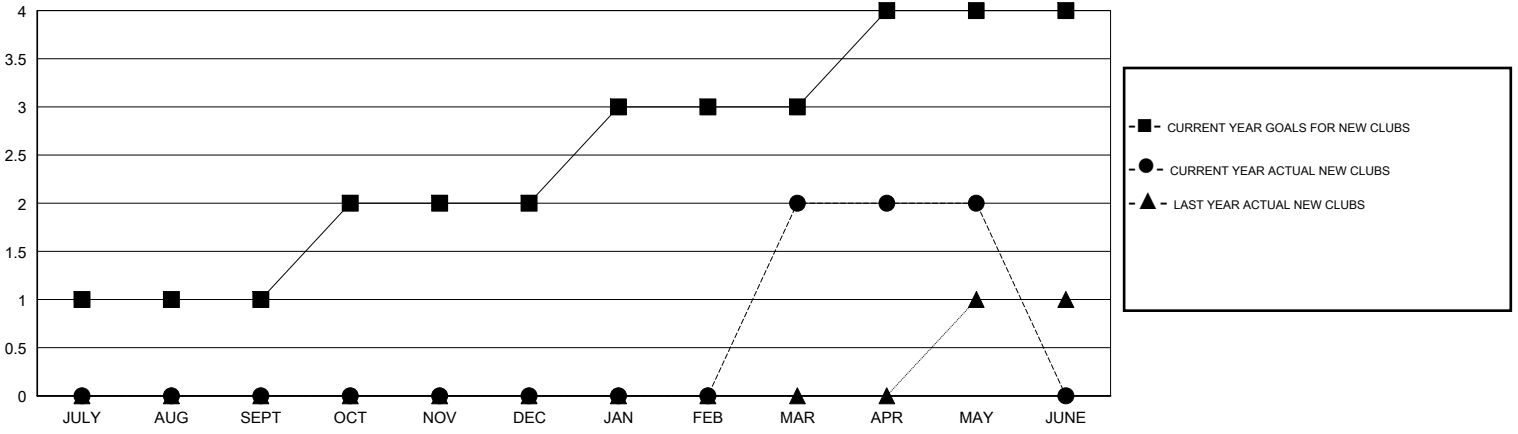
GMT: HAL GRIFFIN

LOCATION TEXAS

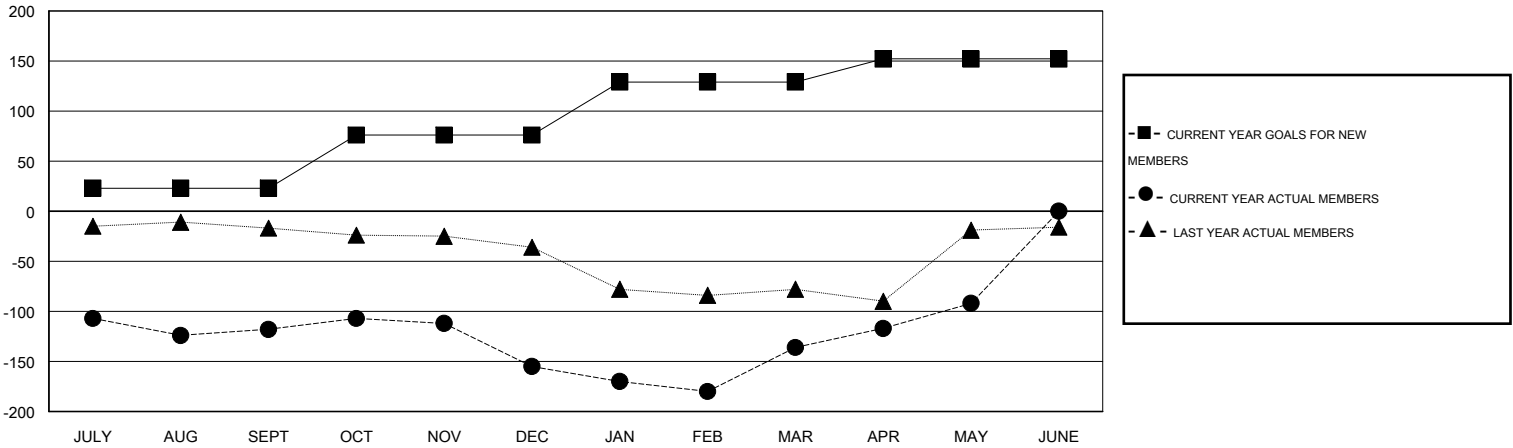
GMT CA 1

Clubs					Members				
RESULTS FOR 2013-2014					RESULTS FOR 2013-2014				
QUARTER	NEW CLUB GOAL	ACTUAL NEW CLUBS	ACTUAL DROPPED CLUBS	ACTUAL NET GAIN/LOSS	QUARTER	NEW MEMBER GOAL	ACTUAL TOTAL MEMBERS ADDED	ACTUAL DROPPED MEMBERS	ACTUAL NET GAIN/LOSS
JULY/AUG/SEPT	1	0	2	-2	JULY/AUG/SEPT	23	72	190	-118
OCT/NOV/DEC	1	0	0	0	OCT/NOV/DEC	53	62	99	-37
JAN/FEB/MAR	1	2	0	2	JAN/FEB/MAR	53	95	76	19
APR/MAY/JUNE	1	0	0	0	APR/MAY/JUNE	23	71	27	44

GOALS AND ACTUAL NEW CLUBS CUMULATIVE



GOALS AND ACTUAL MEMBERS CUMULATIVE



DROPPED CLUBS: 2	55 CLUBS OF 72 ADDED 1 OR MORE NEW MEMBERS	<u>GENDER DISTRIBUTION</u>	
<u>DROPPED MEMBERS</u>		MALE	1,414 (66.51%)
DECEASED	21	FEMALE	712 (33.49%)
CLUB CANCELLED	0	CLICK HERE FOR HEALTH ASSESSMENT DATA	
OTHER	371	FAMILY UNIT MEMBERS	330
TOTAL	392	HEAD OF HOUSEHOLD	162
		NON-HEAD OF HOUSEHOLD	168